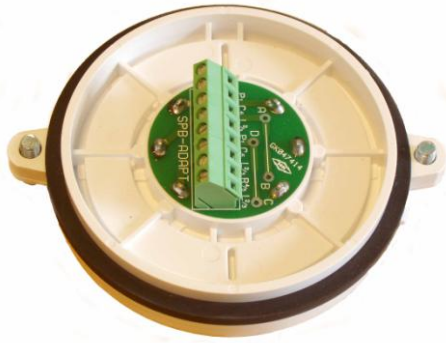


Base adapter *Salwico SPB-ADAPT*

Part no. 046916

System: All Salwico fire alarms



Description

SPB-ADAPT is an adapter for the bases 2IP55 (part no. 46950) and NS-2IP55 (part no. 46900).

SPB-ADAPT is developed to replace the adapters SPB-1 (part no. 46915) and NS-ADAPT (part no. N1421).

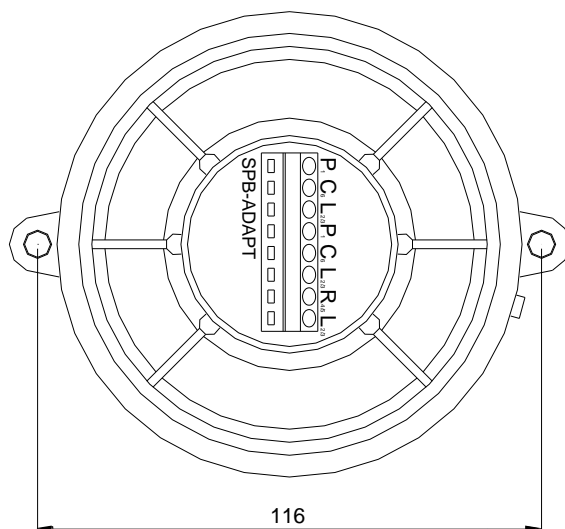
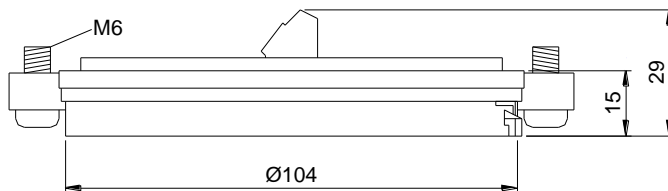
Smoke, heat and flame detectors can be connected to this adapter. For more information about suitable bases, see separate document "Base matrix Salwico units".

The adapter can be used for all Salwico fire alarm systems.

Data

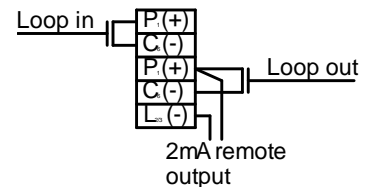
Cable terminals	2.5mm ²
Ingress protection	IP55 (mounted on a base)
Material	PC/ABS
Colour	White
Weight	~110 g

Dimensions (mm)

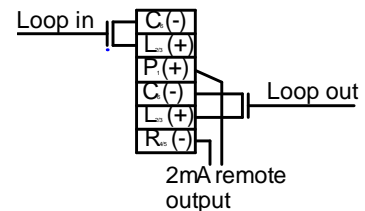


Connection

Addressable detectors: NS, EV and CN



Other Addressable detectors (not NS, EV or CN-type)



Conventional detectors

